

CSI Mobile



Accident & Crime Investigations

Designed by Law Enforcement Professionals

Measure and map crime scenes or traffic accidents with Carlson's CSI Mobile and its companion CSI Office software solutions. They are ideal for use by city and county police departments, State Police and consulting firms engaged in accident reconstruction.

Both easy-to-learn and easy-to-use – all commands appear in one menu – Carlson CSI Mobile offers a library of more than 20,000 automobile makes and models. When recreating an accident scene, you can draw undamaged cars with only two field shots, based on the actual dimensions of the car. Illustrations of damaged cars can be created based on field shots of the damaged area only.

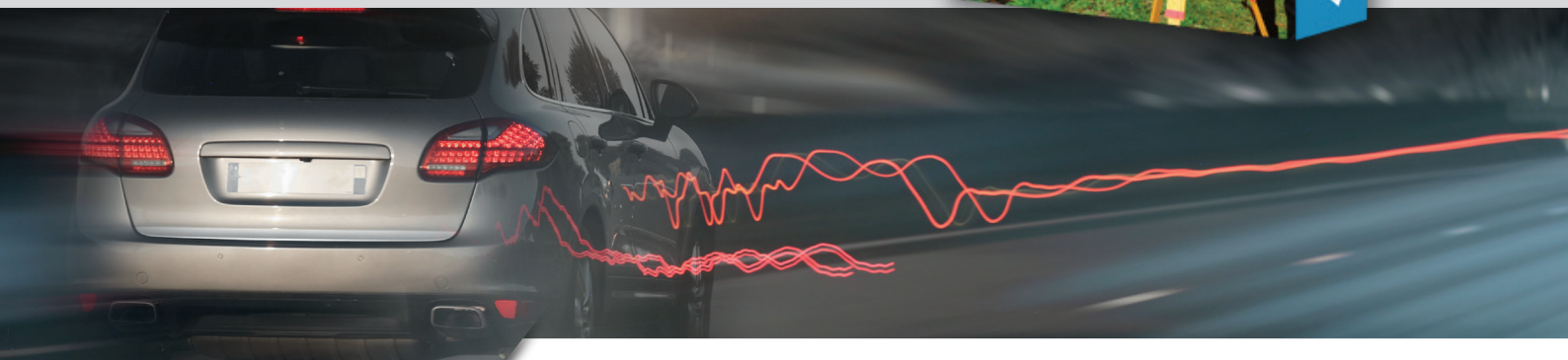
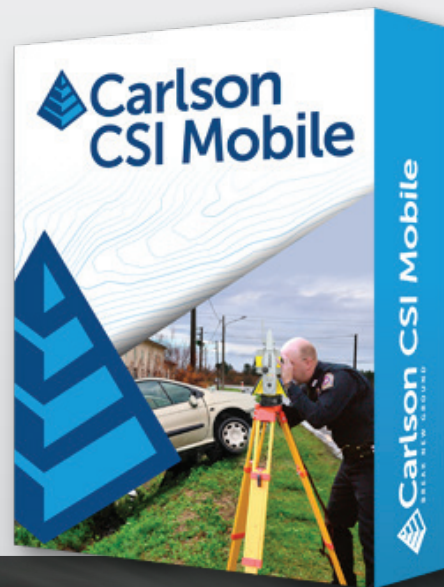
- Draw linework in the field
- Save field shots by extending or joining any point on existing lines
- Easy "Move Up" and "Offset" commands
- Accident Report as Text File based on car make and model

Carlson CSI Mobile and Office is designed specifically for police departments with valued input from the Cincinnati Police Department in its development.

The Cincinnati Police Department worked closely with Carlson Software to develop this product, which is designed to work the way law enforcement agencies work, utilizing the terminology and descriptions required.

"CSI Mobile can be picked up quickly by any law enforcement organization or consultant. It creates graphics that are very complete based on a minimum of field measurements. This means that both field time and office drafting time are reduced to a minimum."

*Bruce Carlson
President, Carlson Software*



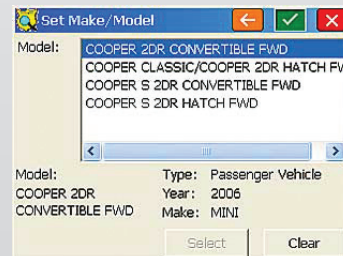
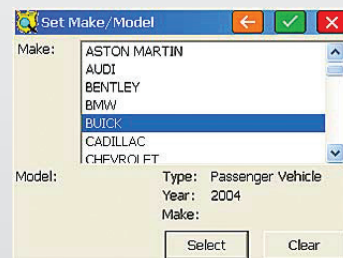
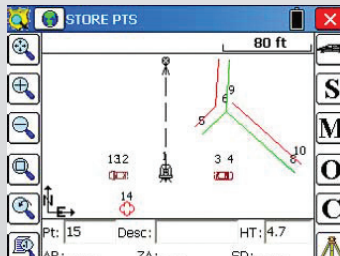
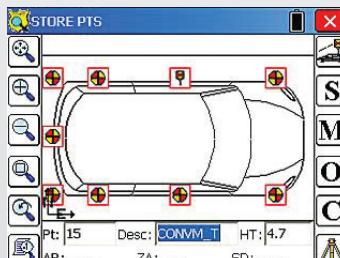
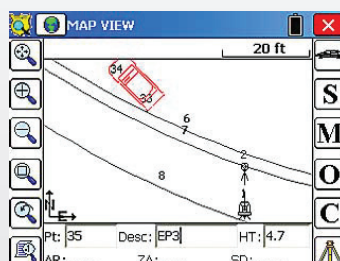
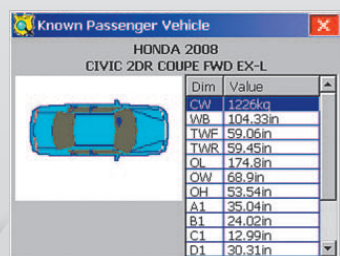
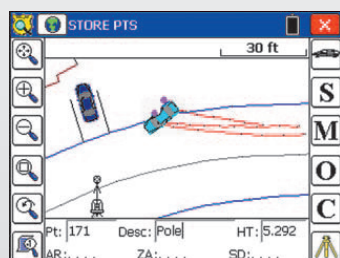
BREAK NEW GROUND

Features/Benefits

- **Save field shots** by extending or joining to any point on existing lines
- **Draw Cars From Library:** Includes a complete library of vehicle dimensions, makes and models such that with selection of known year, make and model, only two shots on known points will produce a complete drawing of the vehicle to scale (saving extra time-consuming shots in the field)
- **Draw Damaged Cars:** Based on field shots of the damaged area only
- **New "Car" Icon:** Will measure cars based either on 3 point shots or on any known point (like the front driver-side tire position) for both damaged and undamaged vehicles
- **Simplified Offset and Move Up commands**
- **Simplified Menu Structure:** Only two "menu worlds" — one screen of survey and file commands and one screen of graphic commands and options
- **Offers Choice:** Supports all major brands of data collectors
- **Prepares accident reports as a text file** based on car make and model

- **Includes Symbol Library** For both accident and crime scenes has symbol library for urban features like manholes, poles and fire hydrants, in addition to trees, road signs, etc.
- **Special Line Designation:** Will draw thickened lines for features such as skid marks, lane separation lines and stop sign stopping bars painted on roads
- **Easy-to-use start and end line system** where description codes such as EP1, EP2 as multiple features are measured

Screen Captures



RUN CSI MOBILE ON THE CARLSON SURVEYOR2 OR THE CARLSON RT3 TABLET

Get the speed you want, with the reliability you need

Carlson CSI Mobile is produced to work on the fast, powerful and durable Carlson Surveyor2 handheld data collector or carlson RT3 rugged device. CSI's screen shots and the tab-based menu are all easy to read and use on both devices.